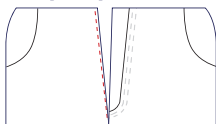
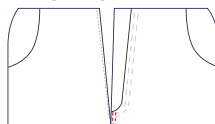


JEANS TECHNOLOGY Vibemac Know-How

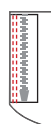
Step Sequence 12A



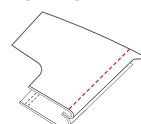
Step Sequence 12B



Step Sequence 9

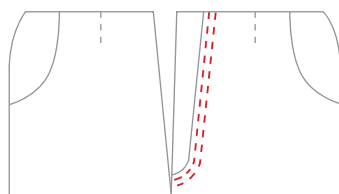
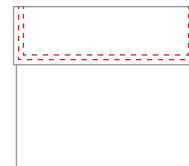
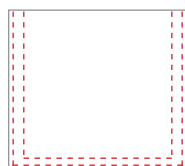


Step Sequence 10

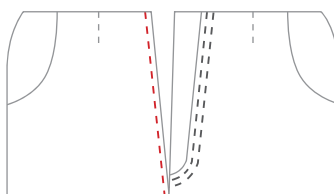


The 2250 series units use a releasable 2 split needle sewing head, modified mechanically, electronically and supplied with dedicated software. It's the ideal solution for assembling the front panels with one machine and one operator instead of 2, 3 or 4 machines with 2, 3 or 4 operators.

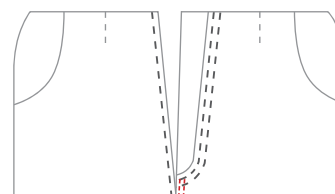
Program your 1-2 needle sequence until a maximum of 4 steps per sequence and start immediately saving handling time, n° of operators, space in the production line, spare parts, electricity and air compressed consumptions.



FIRST STEP



SECOND STEP



THIRD STEP

Technical Features

The great versatility offered by this unit reflects the philosophy of Vi.Be.Mac. flexibility 100%.

The 2250PLC allows to create any 1-2 needle sequence, being able to perform more than one operation in the same working station.

Changing the sequence is easy and quick, this sequence can be varied by the operator at any moment for stylistic/fashion or production reasons. The special patented compensative presser foot is divided in two parts, depending on the type of fabric being used.

The sequence skips to the next step once the operator presses the pedal backward, minimizing the waste of time.

The advantages of replacing two or more 1-2 needle standard machines with one 2250PLC are numerous, there will be a drastic saving in terms of: number of operators, number of helpers necessary to move the garment, space in the production line, energy/air consumptions, spare parts consumption.

The 2250 CORNERS is a special 2 split needles unit ideal to stitch corners.

The unit permits to select one needle instead of the other one.

Special designed to sew pocket corners, flaps and cargo pockets.

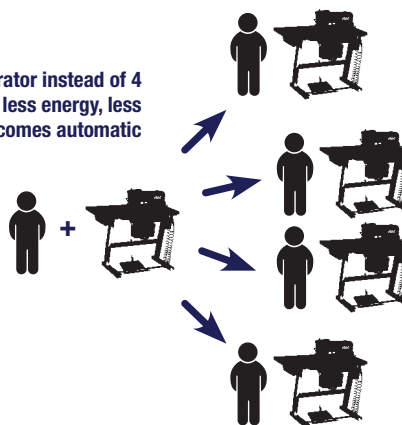
The sequential use of right-hand/left-hand needle can be switched manually at any time by the operator in order to avoid all those problem of low quality in the inner corner when the operation is 2 parallel needles.

It is possible to program how many stitches one or the other needle must not work, after those stitches the needle will start sewing automatically.

The machine is equipped with:

- >> Thread Trimmer
- >> Special Compensative Pressure Foot Developed By Vi.Be.Mac. R&D Dept.
- >> Innovative Thread Catcher With Thread Vacuum System
- >> Mitsubishi XLG 55420Y Servomotor Complete With Electronic Panel With Dedicated Software
- >> Pneumatic Pressure Foot Lifter (Vibemac Patented)

**1 Operator instead of 4
less spare parts, no helpers, less space, less energy, less
maintenance, finally the standard unit becomes automatic**



Technical Specifications

Max Sewing Speed: 3000 rpm

Stitching Length: from 0,5 to 4,5 mm

Needle Gauges: 1/8" (3,2mm) - 3/16" (4,8mm) - 1/4" (6,4mm) - 5/16" (8mm)

3/8" (9,5mm) - 1/2" (12,7mm)

Sewing Machine Motor: Mitsubishi XCG 55420Y

Power Requirement: 220V Single-Phase 50/60

Sewing Head: Mitsubishi LT2-2250 B1T

Control Box: XCG MFY 2005

Gross Weight: 120 kg
**Fumigated Recycled
Packing Dimension**

